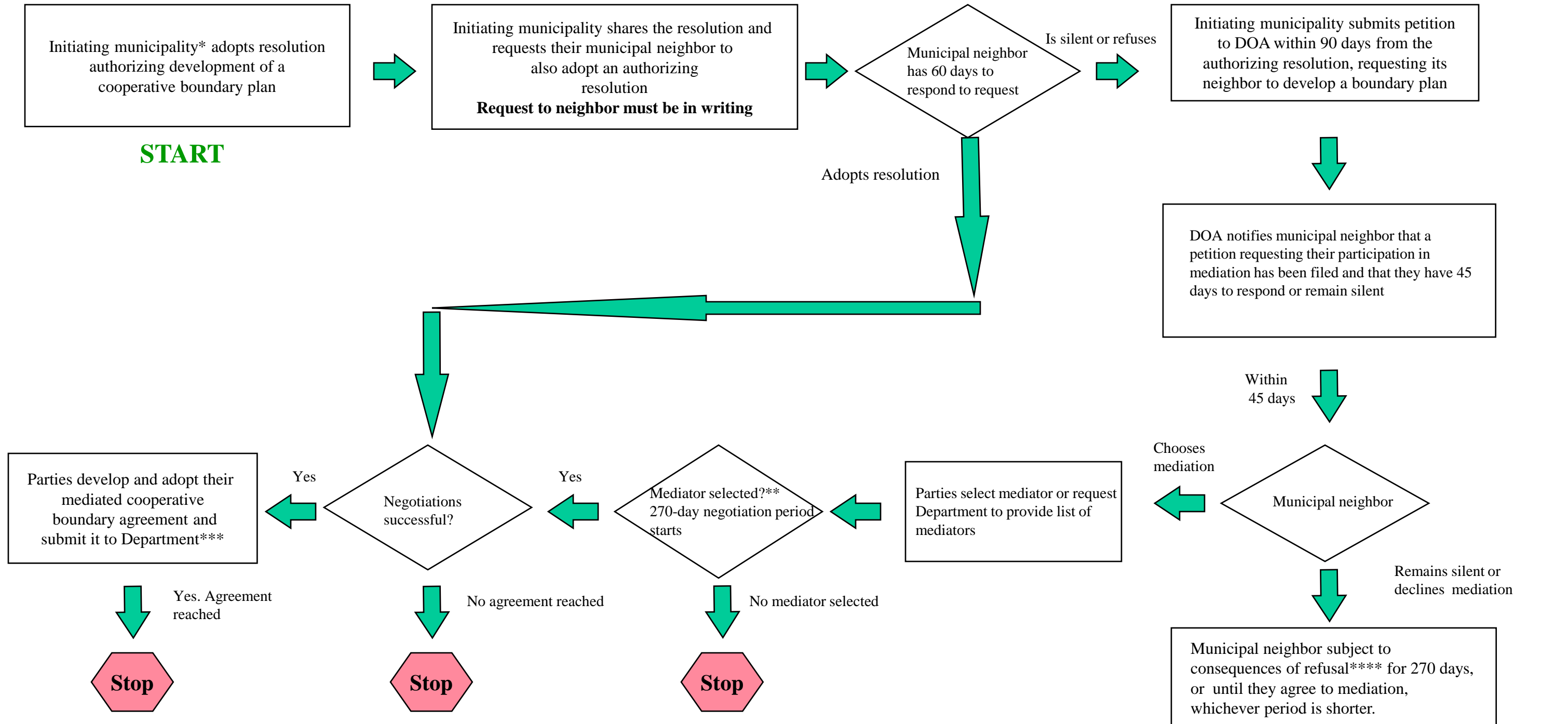


Mediated Procedure for Cooperative Boundary Plans

Section 66.0307(4m) Wis. Stats.



NOTES:

*A municipality must have a adopted comprehensive plan before utilizing the mediated cooperative boundary plan process.

** The parties may agree to extend the 270 day negotiation period.

***The adoption process for a mediated cooperative boundary plan is the same as with a conventional cooperative boundary plan. See [s. 66.0307 Wis. Stats.](#) and also the cooperative boundary plan flowchart.

**** For specifics about the consequences of refusing to mediate, see [s. 66.0307\(4m\)\(c\) Wis.Stats.](#) and ‘*Mediated Procedure for Developing Cooperative Boundary Agreements Factsheet*’

<http://doa.wi.gov/municipalboundaryreview/>